



Advanced Infrastructure Wiring

WEBCO

6575 141st Ave NW

Suite 100

Ramsey, MN 55303

763-767-7229

www.WEBCO-MN.com

2008



About WEBCO – Advanced Wiring and Services

- Licensed in the state of Minnesota
- WEBCO Minnesota was founded in 1984 and open in Minnesota in 1998
- GE Security Pro Dealer – Double product warranty
- Full service Commercial & Residential Life Safety & Security
- Local UL Listed Central Station Operated by Trans Alarm.
- Commercial Analog and Digital (IP) Cameras and Digital Recording
- Alarm.com dealer (<https://www.alarm.com/us/webco-MN/>)
- Commercial Infrastructure Wiring and Computer Networking
 - Experience providing all structured wiring (Phone, Cable, LAN), D-Mark, Wiring closet, Racks, Audio, etc.
- Partnerships and experience including:
 - Federated Service Solutions
 - Walgreen's Stores (Minnesota locations)
 - Target Stores (Minnesota locations)
 - Gander Mountain Stores (Minnesota locations)
 - Marvell Semiconductor (Bloomington)
 - Perfect 10 Car Wash (Blaine)
 - Real-Estate Data Management (Ramsey)
 - Bob FM (Ramsey)
 - Jensen's Foods (Coon Rapids)



Customer Application – Marvell Semiconductor, Inc.

External Connections:

- Ran 50 pair cable between building Demarcation to 7th floor office space.
- Terminate on 110 blocks both in Demarcation and on 7th floor data cabinet.

Data Cabinet:

- 23" data cabinet for mounting patch panels, wire managers, and network equipment. Rails are to be setup for 19" spacing. Data cabinet is the core of wiring infrastructure.
- Used 110 punch down panel for 50 pair tie line to Demarcation.
- Used 110 punch to RJ-45 panel for conversion between 110 inbound and RJ-45 outbound.
- Use 48 port patch panels for data and voice. Data jacks orange and voice jacks blue.
- Use wire managers between patch panels and equipment.

Configured Cubes, Lab and Conference Rooms:

- (3) cat 5e cable from each cube to data cabinet. (2) cat 5e cables for data connections to RJ45 termination. (1) Split one cable for 2 analog connections to RJ-45 termination





Customer Application – BOB FM

External Connections:

- Terminate 110/66 blocks in Demarcation.

Data Cabinet:

- 23" data cabinet for mounting patch panels, wire managers, and network equipment.
- Used 110 punch to RJ-45 panel for conversion between 110 inbound and RJ-45 outbound.
- Use 24 port patch panels for data and voice.
- Use wire managers between patch panels and equipment.

Configured Cubes and offices:

- (4) cat 5e cable from each cube to data cabinet. (2) cat 5e cables for data connections to RJ45 termination. (2) cat 5e cable for 2 analog connections to RJ-45 termination

Security:

- Installed Security Alarms in all offices (Three offices total).
- Provide 24hour monitoring to offices.





Customer Application – Perfect 10 Car Wash

Closed Circuit Television:

- Upgraded old VCR based recorder with GE Digital Recorder
- Sixteen Analog cameras
 - Locations include car wash entrance, car wash exit, customer lobby.
- Motion based recording provides storage for 24 days.
- Recorder attached to Computer Network for real time access.





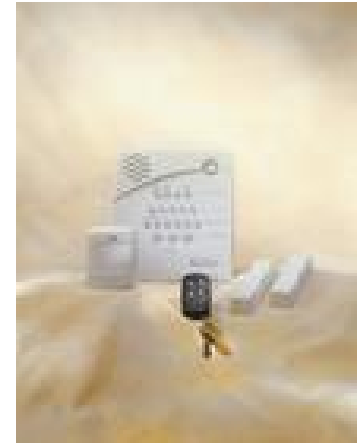
Customer Application – Subway Ramsey

Closed Circuit Television:

- Installed 3 Cameras and GE 16 channel DVMRE

Security Alarm System

- Installed GE Simon system (front and rear door with one motion)



14057 St Francis Blvd
Ramsey MN 55303
763 - 427 - 3035
Diane - Owner



Steve and Barry's - Brooklyn Park

Closed Circuit Television:

- Installed New Robotic camera system
- Installed 15 New fixed cameras at various locations
- Moved 5 current cameras to new locations



STEVE & BARRY'S®





Customer Application – Klicksystems.com - Champlin

Security

- Installed a Wireless GE Security Alarm System

Low Voltage

- Installed various Phone, Cable and Data jacks in offices
- Installed jacks in server room

Computer Network for 7 offices

Owens complete complex

- Additional leads

Occupancy February 2008



**Wade Klick's
Home Selling System**



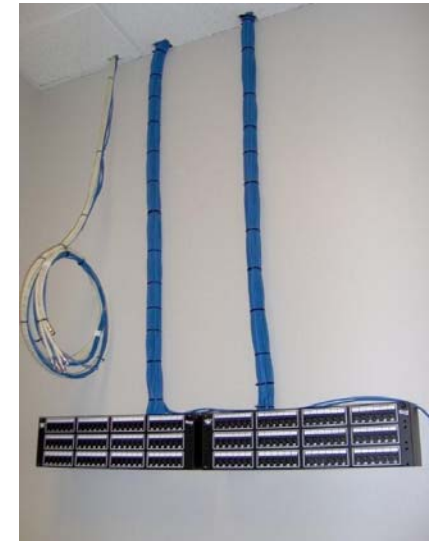
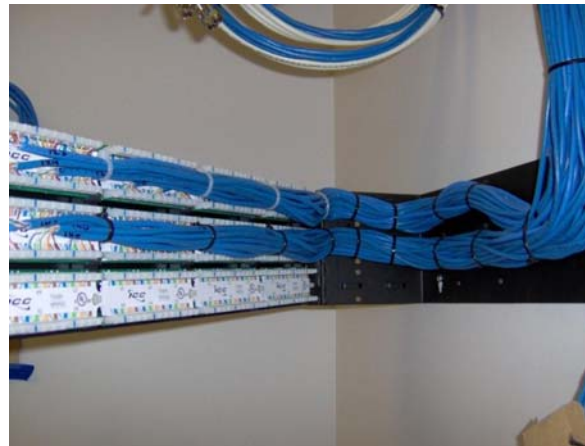


Customer Application – IDWholesaler.com

Low Voltage

- Installed various Phone, Cable and Data jacks in offices and cubes
- Installed jacks in server room

Installed LCD TV's in various locations





Customer Application – Dr B’s Sportscut - Champlin

Security

- Installed a Wireless GE Security Alarm System

Low Voltage

- Installed various Phone, Cable and Data jacks in offices
- Installed jacks in server room

Installed Audio Speaker System

- Three pairs of Klipsch AW-500 speakers in ceiling for ambiance

Installed Single Camera and Digital Video Recorder

- View camera remotely over the internet
- Store video on local recorder for playback later on local PC

Installed 26” LCD TV’s in each hair cut station

